

A decorative graphic element consisting of a circle with a smaller circle inside, connected to a line that extends to the left.

## PUMA™ 3 AE ALL ENVIRONMENT

Building on a legacy of continuous improvement, the Puma™ 3 AE offers system level enhancements for use in land and maritime operations. The Puma 3 AE has operational flexibility never before available in the small unmanned aircraft systems (SUAS) class including upgrades for secondary payloads and third-party applications. The multi-mission capable system allows operators to swap between Mantis™ i45 and the enhanced Mantis i45 N nighttime payload for day, night and low-light operations in extreme environments. Operators can also manually or autonomously navigate the Puma 3 AE while gaining real-time situational awareness and actionable intelligence through AeroVironment's common GCS. Available Puma™ VTOL Kit and Puma™ VNS (Visual Navigation System) expand the operational capabilities by providing vertical take-off and landing in urban environments and GPS-denied navigation in contested environments.

## DISTINCTIONS



»» LINK RANGE  
20 km, 60 km with LRTA



»» WINGSPAN | »» LENGTH  
9.2 ft (2.8 m) | 4.6 ft (1.4 m)



»» WEIGHT  
15.4 lb (7 kg)



»» ENDURANCE  
2.5 hr with Mantis™ i45

## SPECIFICATIONS

<b>PAYLOADS</b>	Mantis™ i45: Dual 15 MP EO/IR Mantis™ i45 N: Dual LWIR/5 MP Low Light
<b>TOTAL PAYLOAD CAPACITY</b>	4 lb (1.8 kg)
<b>SPEED</b>	Cruise: 49 km/hr (26 kts), Dash: 76 km/h (41 kts)
<b>OPERATING ALTITUDE</b>	300-500 ft (91-152 m) AGL, typical Max. launch 10K ft (3,048 m) MSL
<b>GCS</b>	Crysalis™ & legacy common GCS
<b>LAUNCH METHOD</b>	Hand-launched, optional bungee launch or VTOL kit
<b>RECOVERY METHOD</b>	Autonomous or manual precision deep-stall landing

### PUMA™ 3 AE USES PLUG AND PLAY INTEROPERABLE COMPONENTS

Puma™ AE users can leverage existing line-replaceable units (LRUs) to easily upgrade or repair fielded systems. This interoperability builds on a legacy of Puma baselines with hundreds of thousands of operational flight hours. The Puma AE product line provides the warfighter with intelligence, surveillance and reconnaissance (ISR) during day and night operations in all-environment conditions.



Mantis™  
i45/i45 N



Motor/Props



Avionics



GPS/INS



DDL™ Radio



GCS



Servo



Batteries



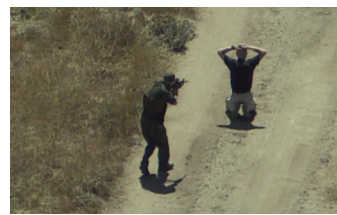
UBC



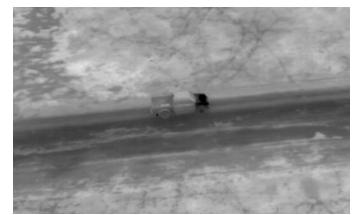
Laptop

## KEY FEATURES

- » All-environment rated
- » Enhanced Digital Data Link™ covering more frequencies & supporting AES-256-bit encryption
- » Reinforced fuselage & center wing accommodates heavier configurations
- » Reduced packaging fits a flyable configuration in a single case
- » Upgraded motor providing up to 26% increased climb rate in heavier configurations for overall mission performance
- » Field-swappable Mantis™ payloads for day & night operations

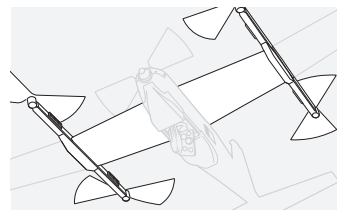


Downlink imagery from Mantis™ i45

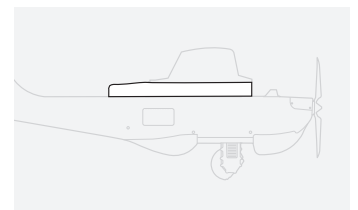


Downlink imagery from Mantis™ i45 N

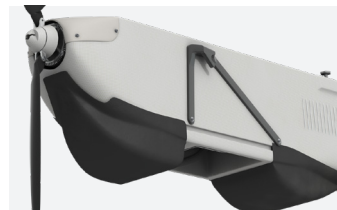
### OPTIONAL ADD-ONS



Puma™ VTOL Kit



Puma™ Universal Transit Bay



Puma™ Bungee Launch System



Puma™ VNS (Visual Navigation System)